



NXL-00P5

0-10V DIMMING EXPANSION PANEL

OVERVIEW

The NexLight® NXL-00P5 is a Dimming Expansion Accessory Panel that allows for the easy addition of 0-10V Dimming Channels to the NexLight Lighting Control System. The small enclosure can easily be mounted in the controlled space or wherever additional 0-10V channels are required. The use of 0-10V for Correlated Color Temperature (CCT) can be achieved by using the 0-10V Control provided in this solution. There is no transformer for control power, the only control power required is supplied by the NexLight 2-Wire Data Bus. The NXL-00P5 provides up to 8 Channels of 0-10V Sinking for either CCT or Dimming applications. This panel includes a Surface Mount NEMA/Type 1 Enclosure with a flat cover secured by screws.

SPECIFICATIONS

Physical

NEMA/Type: 1 (suitable for Plenum Mount)
 Mounting: Surface Mount
 Operating Temperature: 14° to 113°F (-10°C to 45°C)

Electrical (Control Wiring)

Input Signal: 24VAC, Class II

Dimming Channels

0-10V Sinking Current: 100 mA per dimming channel
 Transmission Frequency: 9.6 kHz \pm 0.2 kHz
 High Trim: 100% down to 50%
 Low Trim: 0% up to 50%

FEATURES

- **(8) 0-10V Control Channels (100mA Sinking Current per Channel)**
- **Use with R Series, D Series, or a Custom Panel**
- **Expanded Capacity of the NexLight System using a “building block” solution**
- **Physical High and Low trim level potentiometers to accommodate final adjustment**

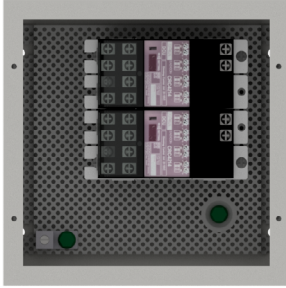
ADDITIONAL PANELS

**See individual accessory specification sheet for more information

NXL-R Series	NexLight R Series Relay Panels
NXL-D Series	NexLight D Series Dimming Panels
NXL-RC Series	NexLight RC Series Room Control Panels
NXL-OPC:	Outdoor Photocell Integration Panel, Remote Mounting (8"H x 8"W x 4"D)
NXL-AVI:	A/V Integration, (8) Dry Contact Inputs (8"H x 8"W x 4"D)
NXL-BMS:	BACnet Protocol Conversion Panel for Building Management System (BMS) Integration (12"H x 12"W x 6"D)
NXL-AMP:	Amplifier Panel for NexLight Data Bus, Supports an additional 485 mA of system devices (12"H x 12"W x 6"D)



NXL-00P5



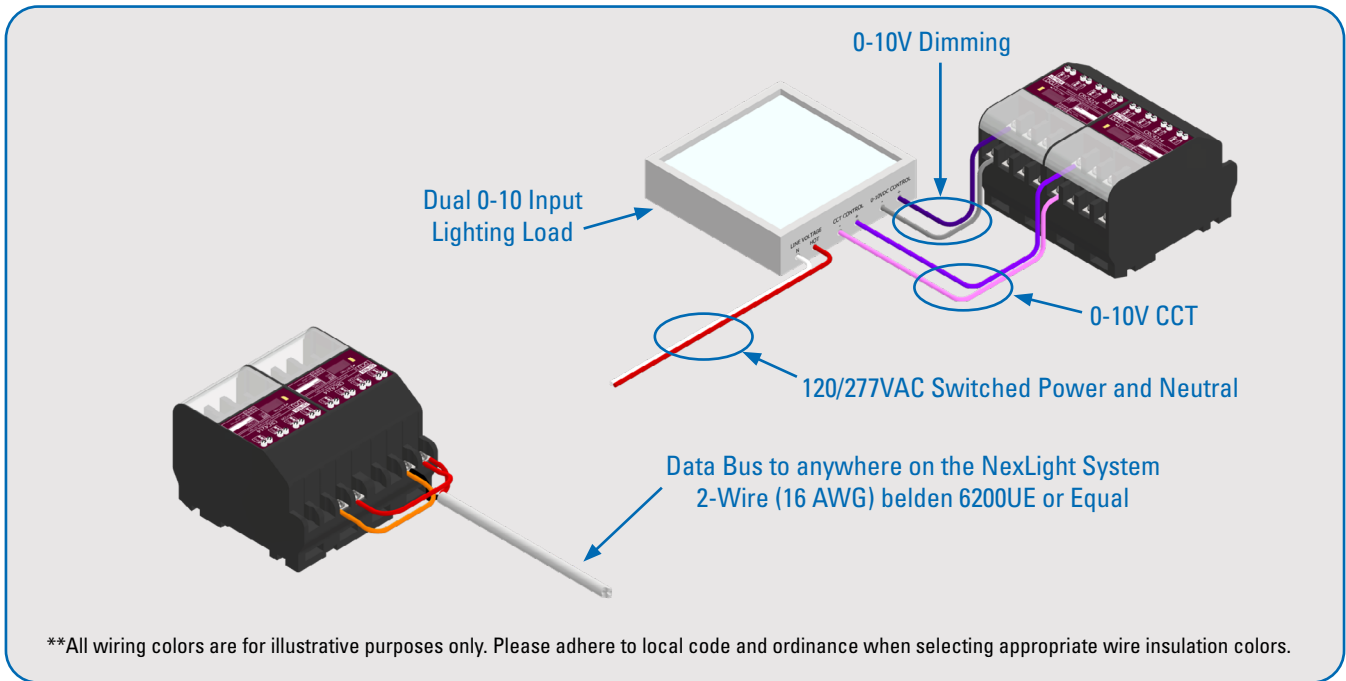
Included Components

- 2 CRC4214 Dimming Control Units (4 Channels each)
- 1 PA-80-1 Panel Assembly


Physical Specifications

NEMA/Type:	1
Mounting:	Surface Mount
Dimensions:	8.00"H x 8.00"W x 4.00"D
Weight:	6 lbs 6.4 oz
Addresses Available:	N/A (Requires Main Panel)
Addresses Used:	8
mA Available:	N/A (Requires Main Panel)
mA Draw:	22 mA
Operating Temperature:	14° to 113°F (-10°C to 45°C)

WIRING DIAGRAM



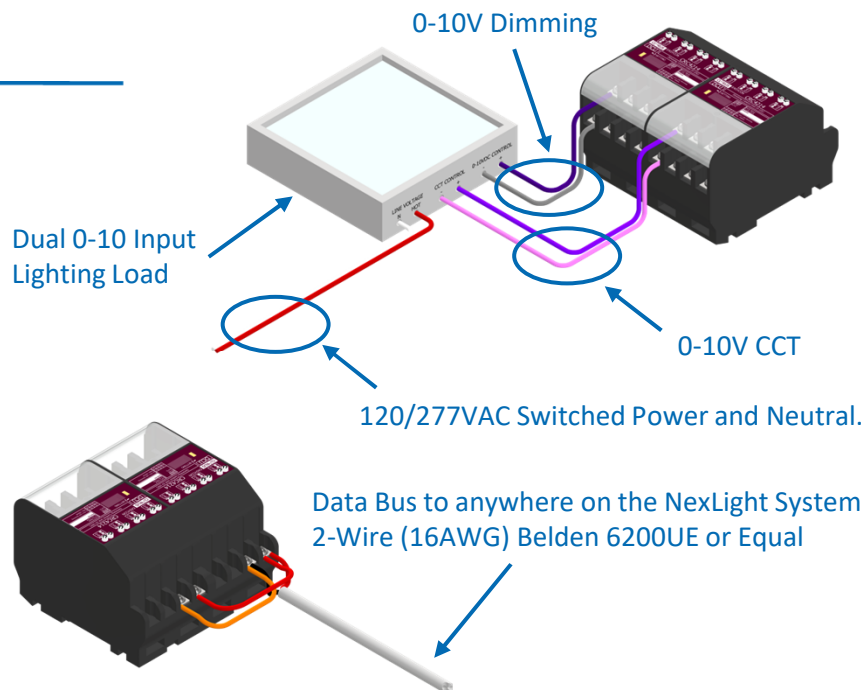
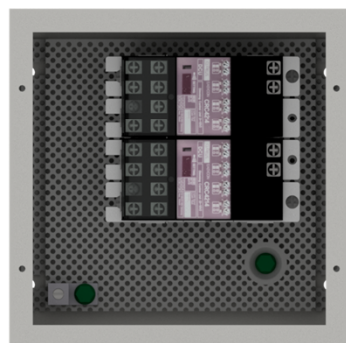
PANEL NAME:		IP ADDRESS:	N/A	
MOUNTING LOCATION:		SUBNET MASK:	N/A	
TRANSFORMER FEED:		DEFAULT GATEWAY:	N/A	
PANEL TYPE:	NXL-00P5	PANEL DIMENSIONS:	8.00"H x 8.00"W x 4.00"D	



LOAD DESCRIPTION	SOURCE	ADDRESS		DEVICE
	CHANNEL 1		-1	CRC4214
	CHANNEL 2		-2	
	CHANNEL 3		-3	
	CHANNEL 4		-4	
	CHANNEL 1		-1	CRC4214
	CHANNEL 2		-2	
	CHANNEL 3		-3	
	CHANNEL 4		-4	
INSTALLING CONTRACTOR TO USE: 16 AWG, BELDEN 6200 UE OR EQUAL; REFERENCE 2-WIRE DATA BUS WIRING DETAIL				

NXL-00P5

0-10V EXPANSION PANEL



APPLICATION OVERVIEW

The NXL-00P5 is a Dimming Expansion Accessory Panel that allows for the easy addition of 0-10V Dimming Channels to the NexLight Lighting Control System. The small enclosure can easily be mounted in the controlled space or wherever additional 0-10V channels are required. The use of 0-10V for Correlated Color Temperature (CCT) can be achieved by using the 0-10V Control provided in this solution. There is no transformer for control power, the only control power required is supplied by the NexLight 2-Wire Data Bus. The NXL-00P5 provides up to 8 Channels of 0-10V Sinking for either CCT or Dimming applications.

APPLICATION HIGHLIGHTS

- (8) 0-10V Control Channels (100mA Sinking Current per channel).
- Use with R Series, D Series or a Custom Panel.
- Expanded Capacity of the NexLight System using a “building block” solution.
- Physical High and Low trim level potentiometers to accommodate final adjustment.

TYPICAL DATA BUS CONNECTIONS

